

## **T-NAWDEX Falcon 2012 Weather summary**

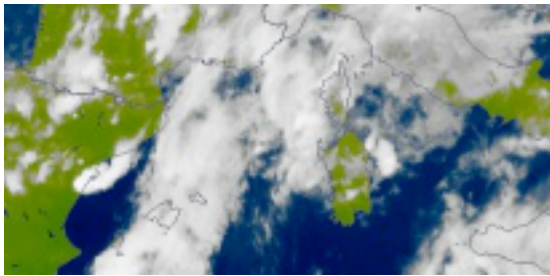
Date (UTC): 20121012 13:30

Author: Franziska Gierth and Philipp Reutter

### **Synoptic Overview**

A deep low north of the British Isles influences the flow structure and brings rain and storm. The cold front will pass France and Germany today.

In the next days a new low-pressure system approaches from the Atlantic.



### **First flight yesterday**

The flight yesterday took place in quite humid air masses as expected for the inflow region of a WCB.

### **Second Flight today ( 12th of October )**

Today the flight in the outflow region of the WCB takes place over Italy. The take-off was at 10:15 UTC. The ensemble forecast of today showed only slight probabilities for WCB activity.

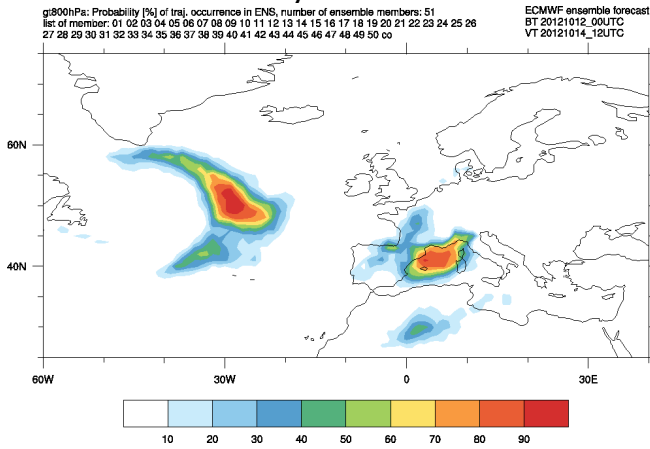
### **General forecast situation**

The WCB we had in mind for the weekend promises more and more to be our golden case. At the end of the week the next trough is approaching and new possible WCB events could take place.

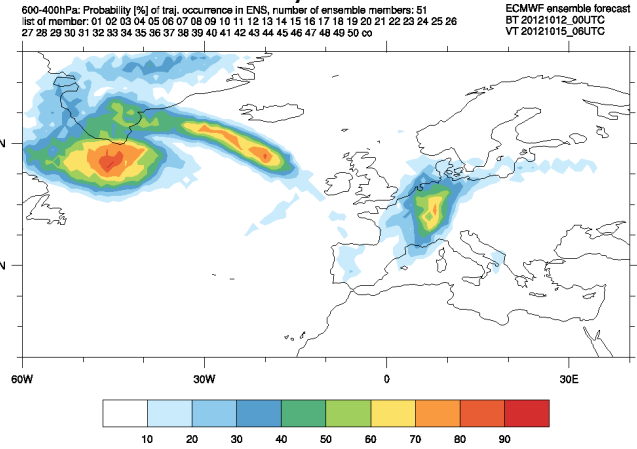
### **Forecast day 2-3 (Sunday 14th and Monday 15th)**

The 12/00 ensemble forecast shows probabilities up to 100% in the inflow region, up to 90% in the ascent region and up to 60% in the outflow region. Therefore the tracer release is planned for Monday morning.

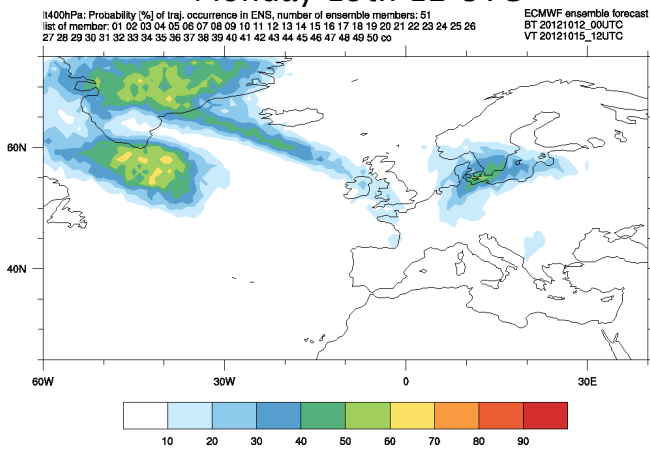
### Sunday 14th 12 UTC



### Monday 15th 06 UTC



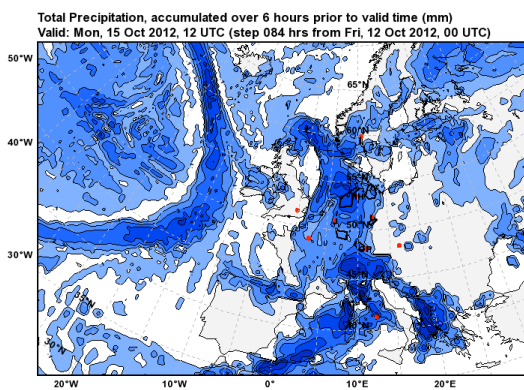
### Monday 15th 12 UTC



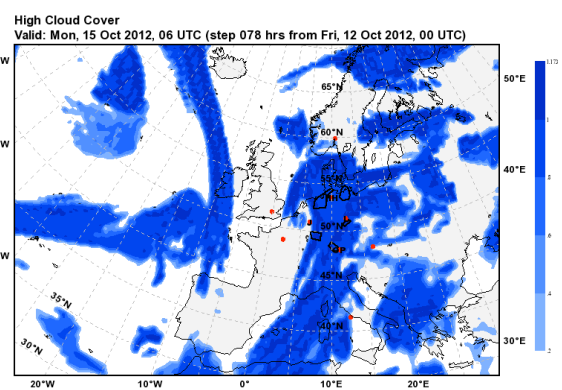
WCB probabilities for > 800 hPa on Sunday, 400–600 hPa on Monday morning and > 400 hPa on Monday evening

On our flight on Monday we also hope to measure different air masses near the front and cirrus clouds above the WCB.

### Monday 15th 12 UTC



### Monday 15th 06 UTC



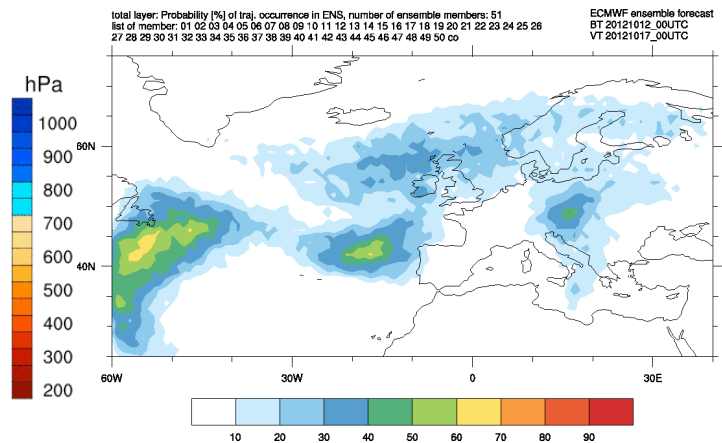
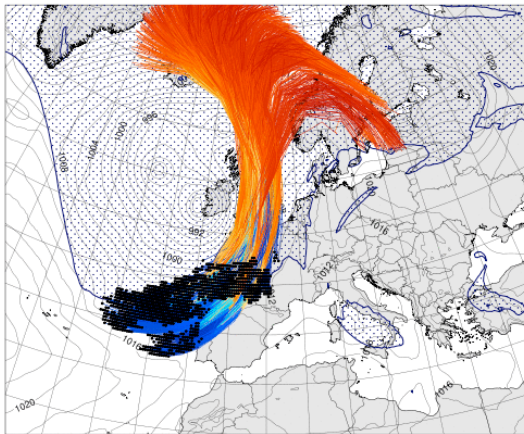
Left: Total precipitation (accumulated over 6h). Right: High cloud cover

## Forecast day 4 to 8 (Tuesday to Friday)

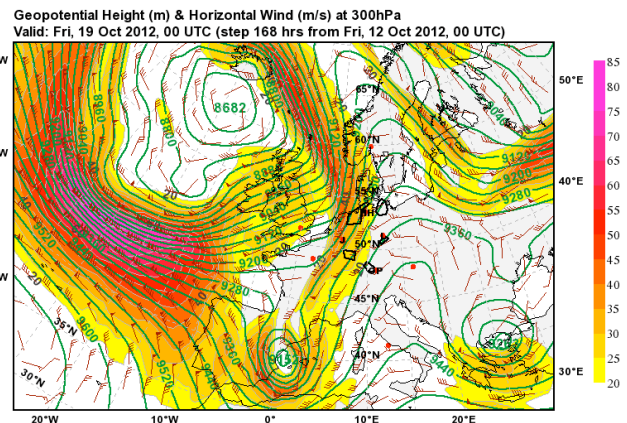
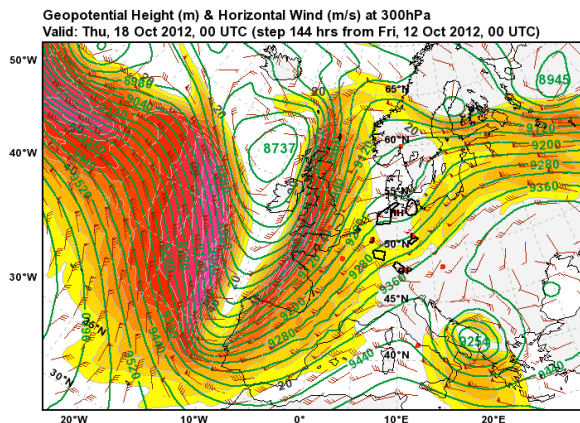
During the next week the WCB activity is high. The inflow region of the WCB on Wednesday 00 UTC is located over the Atlantic and the Iberian Peninsula with ascent over the Bay of Biscaya and France and outflow over Iceland and Scandinavia. At the moment the WCB does not move eastward but we hope it will come into our range in one of the next forecasts.

### p along trajectories, position, 2pvu at 325K and SLP

WCB start at 20121017\_00+0h (valid at 20121017\_00)



On Thursday (fc 12/00 + 144h) and Friday ( fc 12/00 + 168h) an elongated PV streamer over the Atlantic and western Europe and a small scale wave over the Med sea could be associated with WCB activity as well.



Geopotential and wind @ 300 hPa.